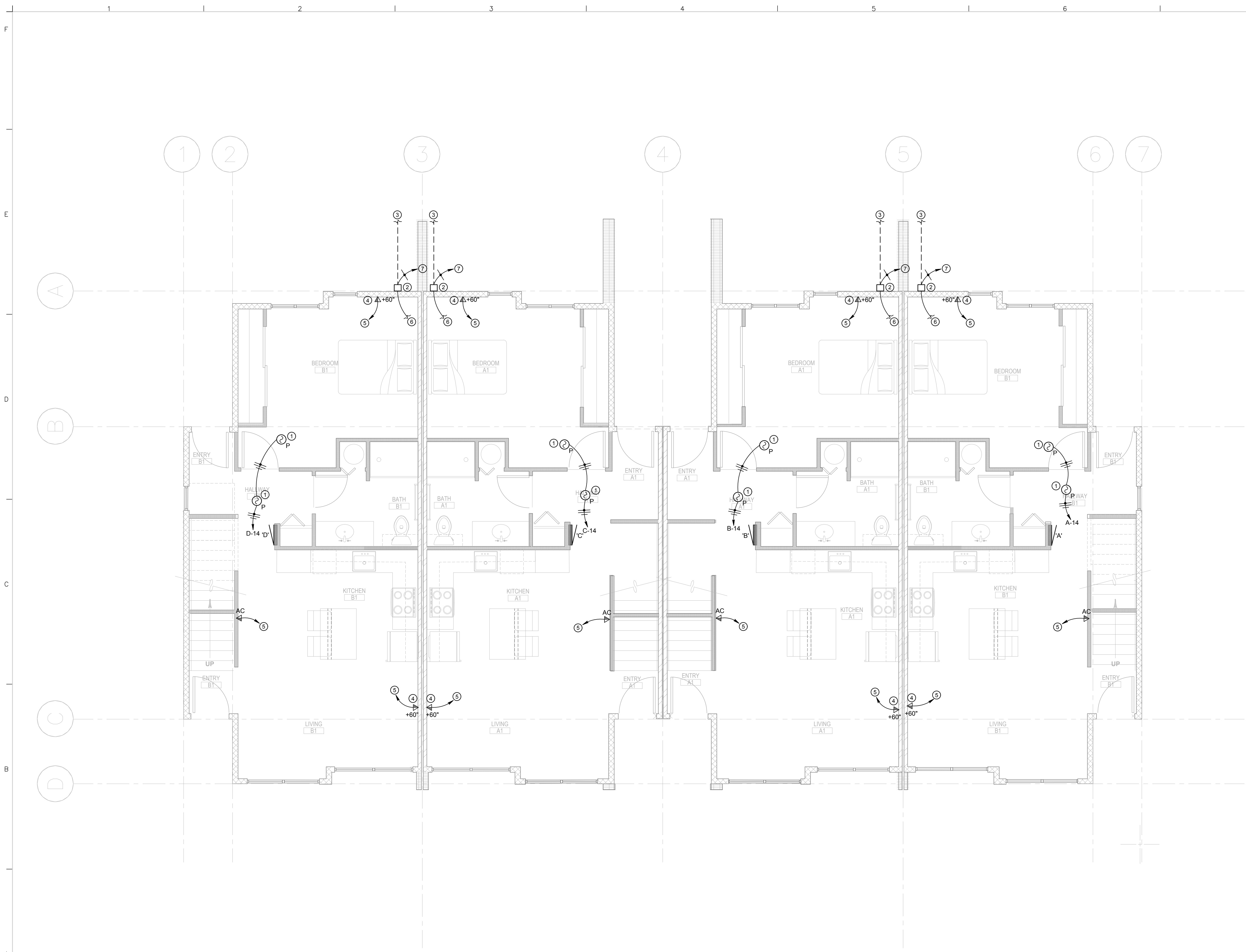


11/07/16 4:11:49 PM THINK Christina Greso



**FIRST FLOOR SPECIAL SYSTEMS PLAN**  
 SCALE: 1/4" = 1'-0"

**GENERAL NOTES:**

- ALL INFORMATION INDICATED AS FURNISHED AND INSTALLED BY DIVISION 16 BELOW IS REQUIRED TO MEET ALL SPECIFICATION REQUIREMENTS (SPECIFICATION SECTION 16715). ADDITIONAL ITEMS MAY BE REQUIRED FOR A COMPLETE INSTALLATION AS PER SPECIFICATIONS AND DRAWINGS.
- ALL DATA OUTLETS INDICATED ON DRAWINGS WITH AC ARE TO BE MOUNTED ABOVE COUNTER. ALL OTHER DATA OUTLETS ARE TO BE MOUNTED AT +18" ABOVE FINISHED FLOOR UNLESS OTHERWISE SPECIFIED ON DRAWINGS. DATA OUTLETS MOUNTED IN MILLWORK ARE TO HAVE MOUNTING HEIGHTS COORDINATED WITH MILLWORK SUPPLIER PRIOR TO ROUGH-IN.
- ALL MULTI-STATION SMOKE DETECTORS INSTALLED WITHIN THE DWELLING UNIT SHALL BE INSTALLED AS FOLLOWS:
  - SMOKE DETECTORS INSTALLED WITHIN 20FT HORIZONTAL PATH OF THE KITCHEN SHALL BE EQUIPPED WITH AN ALARM SILENCING MEANS OR BE PHOTOELECTRIC TYPE DETECTOR.
  - SMOKE DETECTORS SHALL NOT BE INSTALLED WITHIN 3FT OF THE BATHROOM DOORS.
  - SMOKE DETECTORS SHALL NOT BE INSTALLED WITHIN 3FT OF FORCED SUPPLY AIR REGISTERS AND SHALL BE INSTALLED OUTSIDE OF DIRECT AIRFLOW.
  - SMOKE DETECTORS SHALL NOT BE INSTALLED WITHIN 3FT FROM THE TIP OF CEILING FANS.

**KEYED NOTES:**

- FURNISH AND INSTALL 120V MULTI-STATION SMOKE DETECTOR. SMOKE DETECTORS SHALL BE INTERCONNECTED WITH OTHER SMOKE DETECTORS IN SAME UNIT AND IF AN ONE DETECTOR IS ACTIVATED, ALL OTHER DETECTORS SHALL ALSO BE ACTIVATED.
- COMMUNICATIONS SERVICE DEMARCATION POINT.
- (2) 2°C TO COMMUNICATION PEDESTAL FOR CATV AND PHONE. COORDINATE WITH UTILITIES FOR LOCATIONS.
- DATA DROP FOR TV CONNECTIVITY.
- FURNISH AND INSTALL (2) CAT5e DATA CABLE TO DWELLING UNIT MEDIA CENTER ON SECOND FLOOR. SEE SHEET E2.1S FOR ADDITIONAL INFORMATION.
- FURNISH AND INSTALL (2) CAT5E CONDUCTORS AND (1) RG 6U FROM UTILITY DEMARCATION CABINET TO MEDIA CENTER ON THE SECOND FLOOR. SEE SHEET E2.1S FOR ADDITIONAL INFORMATION.
- FURNISH AND INSTALL (1) #6 CU GROUND TO MAIN SERVICE GROUND. SEE 'TTB' DETAIL ON SHEET E3.0 FOR ADDITIONAL INFORMATION.

**think**  
ARCHITECTURE

405 S. 8th St, Suite 290  
Boise, Idaho 83702  
p: 208.685.2855  
f: 208.685.2857  
info@think-arch.com

NEW DEVELOPMENT

**THE 27 ELM**

A HUNTER RENAISSANCE DEVELOPMENT

REDMOND OREGON

REGISTERED PROFESSIONAL ENGINEER  
 DON W. VAN STONE  
 OREGON  
 REG. 09.2003  
 EXPIRATION DATE: 6/30/2016

**COVER SHEET**  
 Sheet Title

**AS NOTED**  
 Scale

**1602**  
 Project Number

**NOVEMBER 8, 2016**  
 Date

**16154 E20SDWG**  
 File Name

Revisions

**E2.0S**

**FOR CITY REVIEW**  
**NOT FOR CONSTRUCTION**

**e2co**  
 electricalengineeringcompany  
 engineering 4 tomorrow

world wide web: e2co.com  
 800 s. industry way, suite 350  
 meridian, idaho 83642  
 phone: 208.378.4450  
 fax: 208.378.4451  
 e2co project #: 16154